



The Tamar - Type F
2 bedroom detached bungalow



The Tamar - Type F

Plots 59, 61 & 63

The
Maples

Ground floor only

Entrance hall

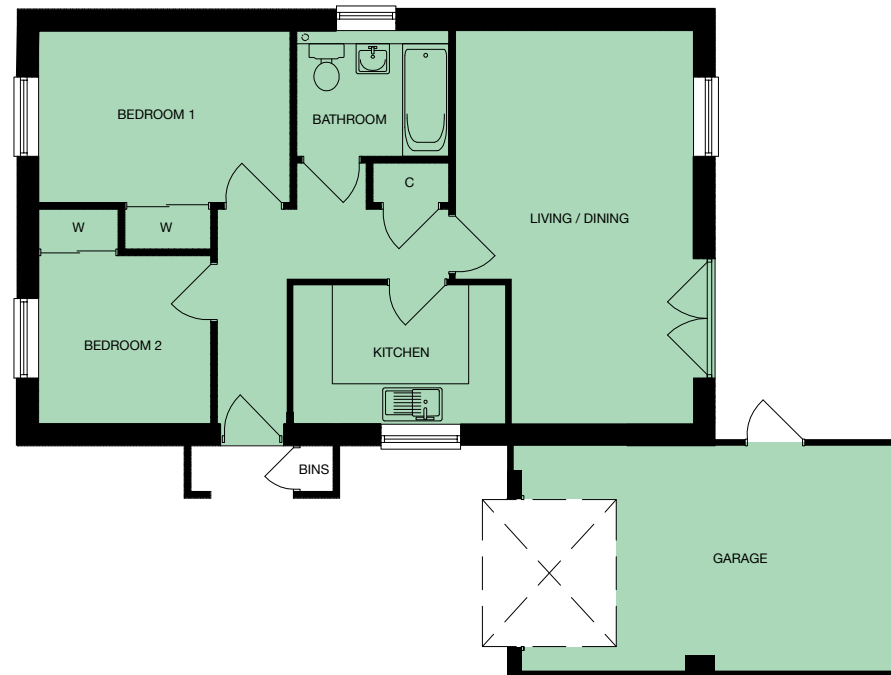
Open plan style lounge / dining / kitchen space

Kitchen area 3.12m (10'3") x 2.17m (7'1")

Lounge / dining area 3.58m (11'9") narrowing to 2.78m (9'1")
x 5.95m (19'6") max

Bedroom 1 3.78m (12'5") x 2.58m (8'5") to wardrobe

Bedroom 2 2.59m (8'6") x 2.54m (8'4") to wardrobe



All measurements given are approximate, for further details please contact the agents. Dimensions given are done so in good faith and before construction has commenced. They are approximate and for guidance only and should not be used for furniture or appliance purchases. Purchasers are strongly advised to confirm actual dimensions when the property is nearing completion or is completed.

Tel. 01209 712121
bradleys-estate-agents.co.uk

NHBC
Registered House Builder


ROBERTSON
DEVELOPMENTS LIMITED

Bradleys
ESTATE AGENTS