

The
Maples



The Kensey - Type H
3 bedroom detached home with en suite



The Kensey - Type H

Plots 9, 10 & 45

The
Maples

Ground floor

Entrance hall

Cloakroom

Lounge 3.42m (11'3") x 6.25m (20'6")

Kitchen dining 2.75m max (9'0") x 5.65m (18'6") max

First floor

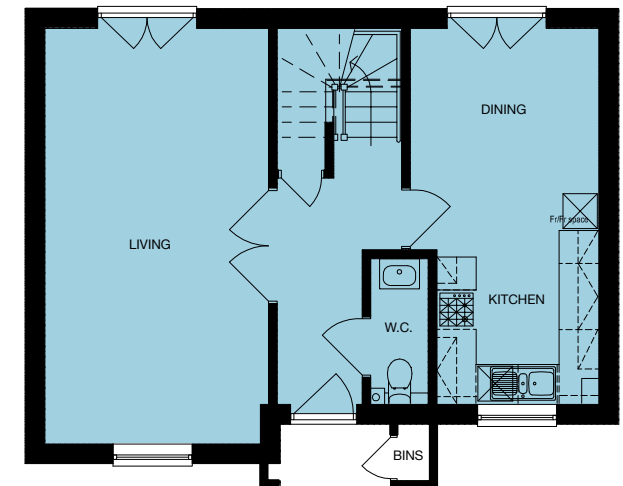
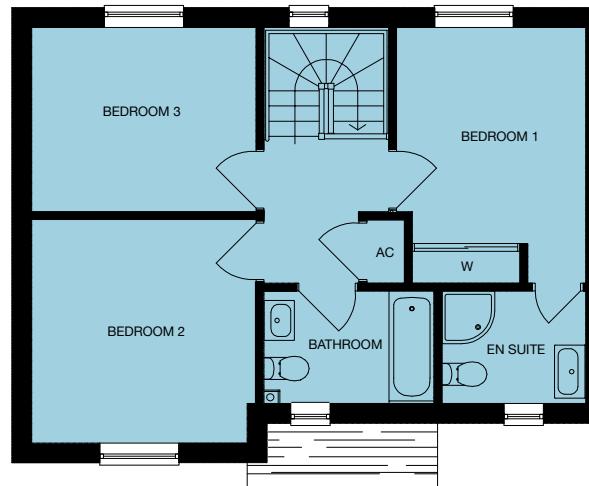
Bedroom 1 2.75m (9'0") max x 3.15m to wardrobe (10'4")

En suite

Bedroom 2 3.20m (10'6") max x 3.36m (11'0")

Bedroom 3 3.43m (11'3") x 2.75m (9'0")

Bathroom



All measurements given are approximate, for further details please contact the agents. Dimensions given are done so in good faith and before construction has commenced. They are approximate and for guidance only and should not be used for furniture or appliance purchases. Purchasers are strongly advised to confirm actual dimensions when the property is nearing completion or is completed.

Tel. 01209 712121
bradleys-estate-agents.co.uk

NHBC
Registered House Builder


ROBERTSON
DEVELOPMENTS LIMITED

Bradleys
ESTATE AGENTS