

The
Maples



The Cober - Type L
4 bedroom detached home with en suite



Bradleys
ESTATE AGENTS

The Cober - Type L

Plots 4-7 & 60

The
Maples

Ground floor

Entrance Hall

Cloakroom

Living room 3.25m (10'8") x 4.48m (14'8")

Study / family room 3.25m (10'8") x 2.05m (6'9")

Kitchen / Dining 3.14m (10'4") narrowing to 2.60m (8'6") x 6.65m (21'10")

First floor

Bedroom 1 3.25m (10'8") x 3.30m (10'10") to en suite

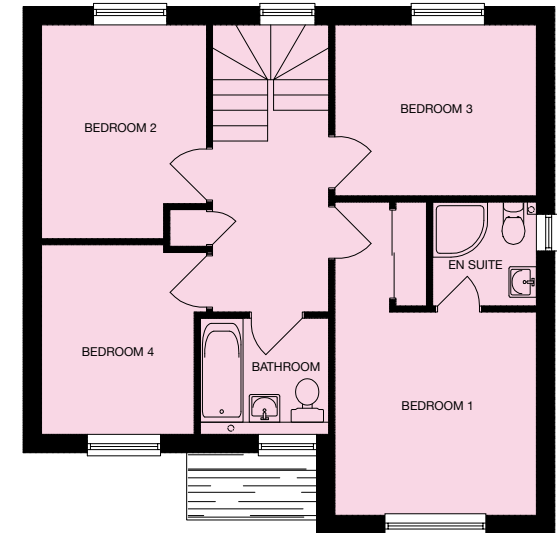
En suite shower room

Bedroom 2 2.60m (8'6") max x 3.44m (11'3")
narrowing to 2.7m (8'10")

Bedroom 3 3.35m (11'0") x 2.75m (9'0")

Bedroom 4 2.47m (8'1") max x 3.08m (10'1") max

Bathroom



All measurements given are approximate, for further details please contact the agents. Dimensions given are done so in good faith and before construction has commenced. They are approximate and for guidance only and should not be used for furniture or appliance purchases. Purchasers are strongly advised to confirm actual dimensions when the property is nearing completion or is completed.

Tel. 01209 712121
bradleys-estate-agents.co.uk

NHBC
Registered House Builder

ROBERTSON
DEVELOPMENTS LIMITED

Bradleys
ESTATE AGENTS